



ZAC and ANGELO

TECHNICAL RIDER

DURATION: 50mn

GENERAL CONDITIONS

The present technical rider is integral part of the contract.

A copy signed and initialed by the promoter of the performance should be returned to us with the contract.

The technical setup, (sound, lighting staging), and its good working condition, is the promoter's responsibility.

The promoter commits to provide a functioning theatre. It should be in the regular seating configuration and should be heated to maintain an ambient temperature of 22° upon the arrival of our technical team.

Any issues or problems found in this technical rider must be communicated to us as soon as possible so that we can find solutions for them.

All adaptation and modification will be subjected to written agreement between the concerned parties.

Please get back to us as soon as possible:

- The technical specifications of your venue and technical drawings in plan and section views.
- The sound system specifications and drawings in your venue
- The total audience capacity of your venue.

STAGING

Crew required: (Also see schedule)

1 stage hand and 1 stage manager

Because of difficulties in unloading the set, a supplementary crew could be asked for the unloading and loading of the truck.

We will send you our technical specifications upon receipt of your technical rider. We also need technical drawings of your venue in plan and section views. These should be in a scale of 1:50

SET UP

The set up consists of:

- 2 trestles
- 1 smoke machine
- 1 set of props and costumes

We arrived with 4 bags of 20kg for our set up.

STAGE

The stage must be in wood (dance floor), constructed solidly (resistance 500kg / m²), put to level on all its surface, perfectly plane, correctly aligned in relation to the auditorium and clean .It must rest on one hard soil. 2 stairs of access on both sides of the stage, and circulation left / right imperative. The wings should have blue running lights for the safety of the cast and crew.

Ideal measurements:

Proscenium opening:	minimum 08metres (m)
Depth:	minimum 08m
Height under grid:	minimum 06m
Proscenium height:	minimum 06m
Opening of wall to wall:	minimum 10m

Equipment to be provided by the venue:

- 4 black borders
- 8 black legs
- 1 black back drop
- 1 house curtain (main drape)
- 1 set of black dance mat sufficient for the stage the stage
- 1 piece of wood 200cm x 60cm x 2cm for our set up

LIGHTING

Crew required: (Also see schedule)

2 electricians, 1 master electrician

Equipment to be provided by the venue:

1 lighting board capable of recording cues and sequencer.

48 channels 3KW (numeric cell so possible)

07 Profiles 1KW 15/40°

10 Profiles 1KW 29/50°

16 PAR 64

24 PC 1KW

Colour: please refer to the patch sheet

We will need a safe ladder or lift to comfortably focus lights in all positions

SOUND

Crew required: (Also see schedule)

1 sound engineer

A pre hung speaker system should be already installed.

Equipment to be provided by the venue:

FRONT OF HOUSE:

This performance requires a homogeneous sound system in multi-amplification assuring a good sound level in all points of the theatre and respecting an important dynamics.

There should be adequate front fills and delay speakers in cases where the venue has large stalls and circles.

Equipment recommended:

- C.HEIL / MTD 115 + sub MTD 118/218 + forehead-fills MTD 112/108
- SHOP 33 AMADEUS set / PB600 + PB2000 sub + forehead-fills MPB200
- or equivalent

The sound system has to be coherent and of good quality. There should be a set of processors for the sound system so that adjustments can be made.

If the equipment that you have doesn't make part of this list, please contact our company manager to figure out a solution through substitution.

Know that in any case, a preference is given to the coaxial system.

Silence on stage is of outmost importance. There might be problems of ambient noise from the sound system. Positioning of the system need to be precise to avoid this.

FRONT OF HOUSE SOUND SYSTEM:

6 or 8 speakers + 2 sub bass (power adapted to the venue 4 KW minimum)
(ex:C.HEIL acoustic MTD 115 + 2 sub MTD118 bass or SB 218 + 3 MTD processors 115 lica + amplifiers) **or equivalent system**

STAGE MONITORS:

4 speakers on stands (power 2 KW minimum, 2 upstage / 2 downstage)
(ex:C.HEIL acoustic MTD 112 + processor and amplifiers) **or equivalent system**

SOUND CONTROL AND PROCESSORS:

- 01 Mixing board 16 / 4 / 2 (Ex: YAMAHA 01 V)
- 02 equaliser's stereo 2 x 30 strips (Ex: KLARK THECHNIC DN 160)
- 01 multipair module audio 24 pairs
- 01 Mini-Disc players with start cues and variable speed (auto-ready function)
- 01 CD disc players with autocue
- 01 reverb
- 01 delay (Ex: YAMAHA 20 / 40)
- 01 wireless microphone rehearsal (HF)

VARIOUS:

1 Clear-com main station intercom with 3 sub stations

THE FRONT OF HOUSE SOUND CONTROL SHOULD BE IN THE AUDITORIUM, 15m TO 20m FROM THE STAGE.

DRESSING ROOMS

1 dressing room (minimum)

The dressing rooms should be equipped with the following items:

Make up table, chairs, mirror on stand, and hangers for costumes, paper basket, ashtrays, electric plugs (16 TO). The dressing room should have adequate heating, toilets and showers.

- 1 ironing board
- 1 iron
- 2 mobile costumes racks
- 1 washing machine
- 1 dryer

A large quantity of bottled non-sparkling, mineral water, coffee, tea, fresh and dry fruits.

SECURITY

The smooth progress of the performance will be the promoter's responsibility.

During rehearsals, only authorized personnel should be allowed to be around the backstage areas.

During the performance, only the company members and the stage crew should be allowed around the backstage areas.

After the performance no one should be allowed to access the stage, backstage and dressing room areas unless otherwise stated by the stage manager")

Paris, in two copies, the

THE PRODUCER

THE PROMOTER

"Zac and Angelo" Technical Schedule

first day

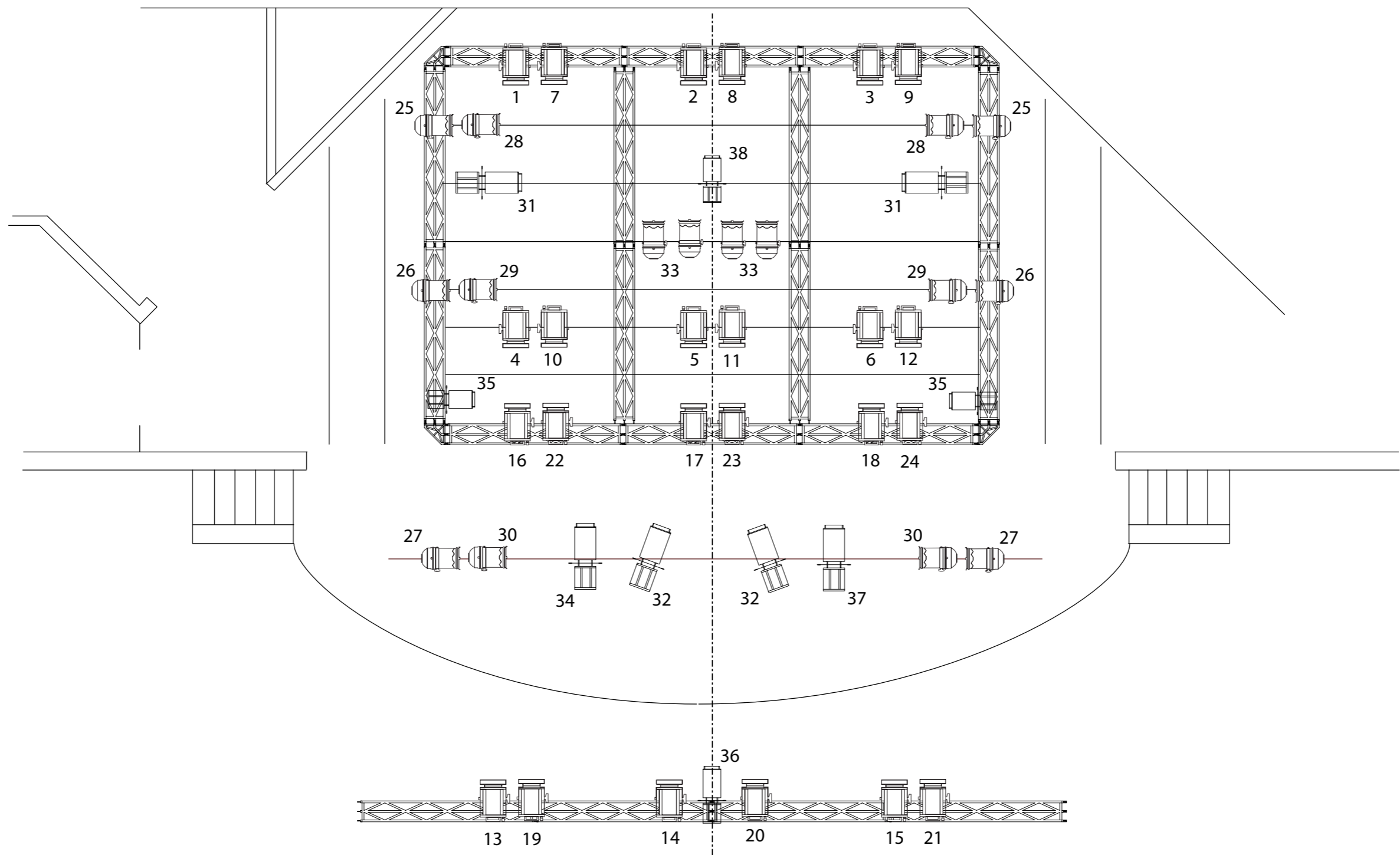
Time	Designation	Stage Manager	Stagehand / Flyman	Light Manager	Electrician	Sound Manager
9am - 12:30pm	Load in Setup Setup light Setup Sound Setup video	1	2	1	2	1
2pm - 5pm	Focusing Plotting Preparation dressing room Sound check	1	2	1	2	1
5pm - 6:30pm	Generale Rehearsal					1
7pm - 7:30pm	Stage cleaning		2			
7:45pm 8pm 8:30pm	Pre-set Public opening Performance	1	1	1	1	1
10pm	Strike (2 hours)	1	2	1	2	1

second day

4pm - 6pm	Correction	1	1	1	1	1
6pm - 7pm	Stage cleaning		2			
7:45pm 8pm 8:30pm	Pre-set Public opening Performance	1	1	1	1	1
10pm	Strike (2 hours)	1	2	1	2	1

LIGHT LISTING
"Zac and Angelo"

Dimmer	Channel	Designation	Filter
	1	1 x PC 1KW	195 / # 114
	2	1 x PC 1KW	195 / # 114
	3	1 x PC 1KW	195 / # 114
	4	1 x PC 1KW	195 / # 114
	5	1 x PC 1KW	195 / # 114
	6	1 x PC 1KW	195 / # 114
	7	1 x PC 1KW	147 / # 114
	8	1 x PC 1KW	147 / # 114
	9	1 x PC 1KW	147 / # 114
	10	1 x PC 1KW	147 / # 114
	11	1 x PC 1KW	147 / # 114
	12	1 x PC 1KW	147 / # 114
	13	1 x PC 1KW	201 / # 114
	14	1 x PC 1KW	201 / # 114
	15	1 x PC 1KW	201 / # 114
	16	1 x PC 1KW	201 / # 114
	17	1 x PC 1KW	201 / # 114
	18	1 x PC 1KW	201 / # 114
	19	1 x PC 1KW	# 114
	20	1 x PC 1KW	# 114
	21	1 x PC 1KW	# 114
	22	1 x PC 1KW	# 114
	23	1 x PC 1KW	# 114
	24	1 x PC 1KW	# 114
	25	2 x PAR 64 CP62	200
	26	2 x PAR 64 CP62	200
	27	2 x PAR 64 CP62	200
	28	2 x PAR 64 CP62	W
	29	2 x PAR 64 CP62	W
	30	2 x PAR 64 CP62	W
	31	2 x Profile 15/40°	W
	32	2 x Profile 15/40°	W
	33	4 x PAR 64 CP60	W
	34	1 x Profile 15/40°	W
	35	1 x Profile 15/40°	W
	36	1 x Profile 15/40°	W
	37	1 x Profile 29/50°	W
	38	1 x Profile 29/50°	W
	39		
	40		
	41		
	42		
	43		
	44		
	45	2 x Profile 29/50°	
	46	2 x Profile 29/50°	W
	47	2 x Profile 29/50°	W
	48	Auditorium	



ZAC and ANGELO